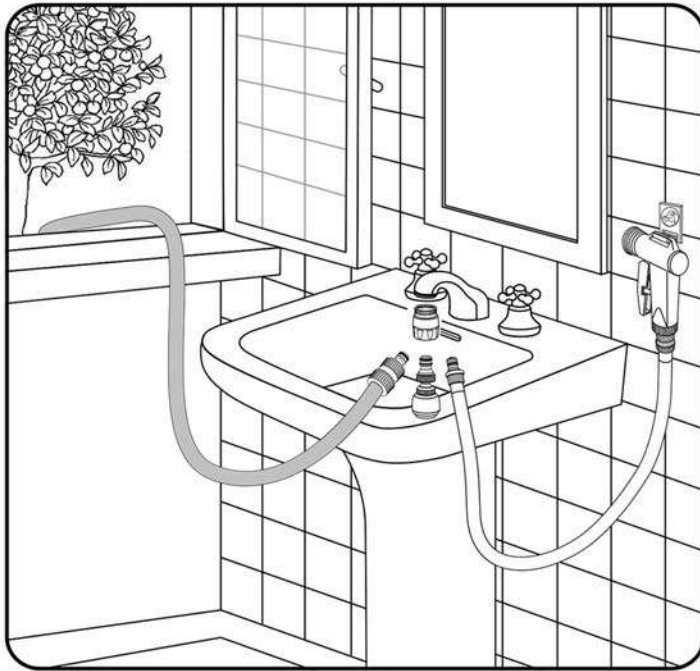


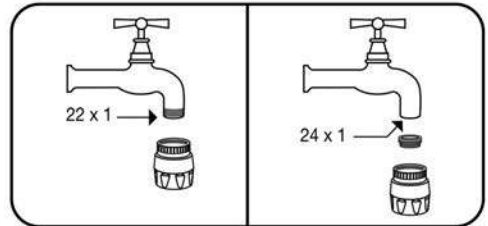
# HOUSE & GARDEN KIT



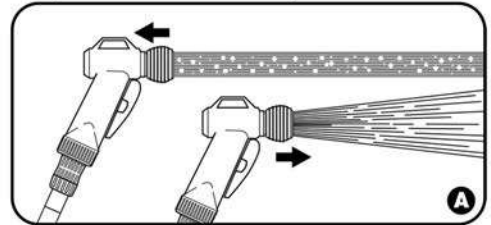
The quick connector, screwed to the house water tap, allows you to easily interchange the tap sprayer with the hand shower, or the connection of the garden hose for the outside use of nozzle or shower. In this way, you can wash the car, water the plants in the garden and use the hot water of the house to wash the dog outdoors with the hand shower.

## Kit components

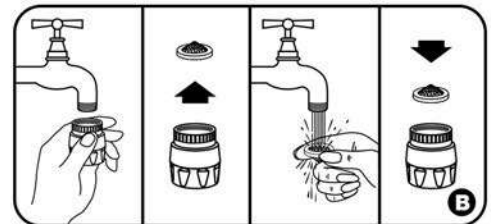
- Quick connector with adapter for connection to water taps with 22 mm Male (external) or 24 mm Female (internal) thread
- Aerator-shower tap sprayer with swivel and male coupling
- Flexible hose in PVC mt. 1,5 with male coupling
- Micronette Regal hair-wash shower with aerator-shower and total closure
- Support for hanging the Micronette Regal hand shower
- Male coupling for the garden hose
- Quick connector with valve for the garden hose
- Nozzle



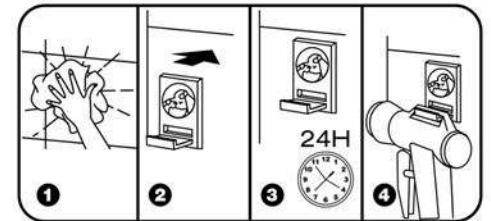
Easy connection with our quick connector



To obtain one of the two performances, it is sufficient to move backwards or forwards the outer collar of the spray (pict. A). Always turn the tap off after use.



In case jet should be imperfect or irregular, clean the special wire gauze filter (pict. B).



**FR**

Pour obtenir l'une ou l'autre des deux utilisations reculer ou avancer la partie extérieure de la douchette (fig. A). Après l'utilisation fermer toujours le robinet.

Si le jet devient imparfait ou irrégulier, nettoyer la grille-filtre (fig. B)

**ES**

Para obtener una de las dos prestaciones es suficiente retroceder o avanzar la parte exterior del atomizador (fig. A). Después de su uso, cerrar siempre el grifo.

Quando el chorro se presenta imperfecto o irregular, proveer a la limpieza de la apropiada redcilla-filtro (fig. B)



As for any device with a total closure, remember to check the water temperature each time the flow resumes.

Always close the main water tap after use.

# PACKAGE

