

# AERATOR TAP SPRAYER

## WITH DOUBLE SWIVEL AND BRASS NUT

For taps with 22 mm Male thread

Weight g 40



Adapter 22x1M Male – 24x1M  
Male for taps with 24 mm Female  
thread (internal)



## INSTALLATION

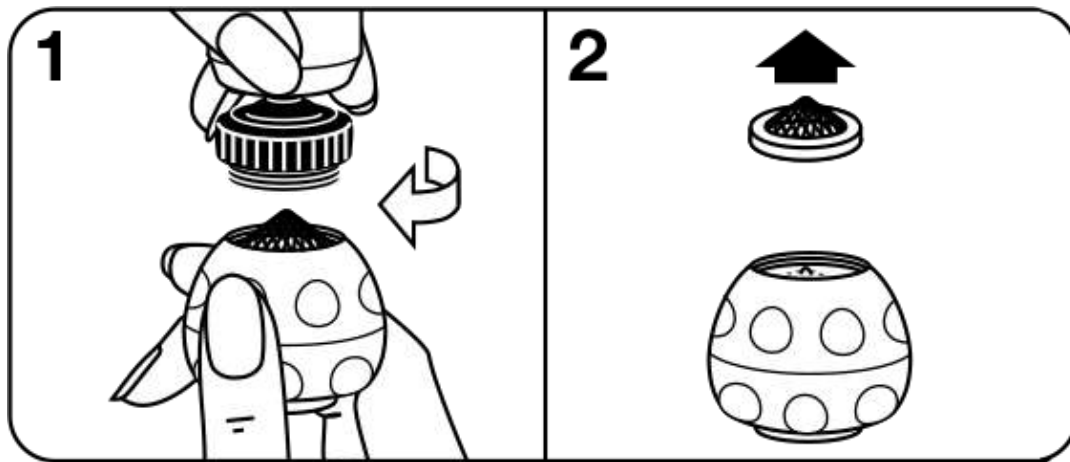
ATTENTION: it is not necessary to tighten too hard as you only risk damaging the lock nut. For a perfect watertight seal, the male tap thread must be flush with the end of the female tap sprayer thread, by using the provided washers.

## FUNCTIONALITY



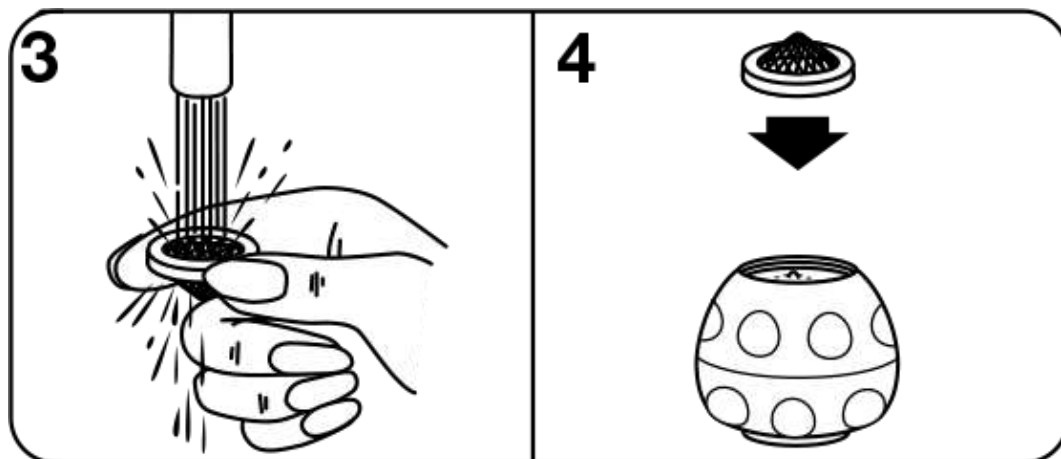
A mixture of water and air generates a soft stream, reducing the splashes.

# MAINTENANCE



To keep the tap sprayer always in perfect conditions (even in case of irregular flow), clean the special stainless steel screenwasher.

1. Unscrew the aerator head;
2. remove the screenwasher;



3. rinse the screenwasher with water;
4. replace the screenwasher.

If you notice limescale deposits, simply unscrew the aerator head, soak it in vinegar or an anti-limescale product for a few hours and brush off the residues: it will be as good as new.

For the bidet use, the aerator body to be screwed to the mixer tap swivel is also available.



## PACKAGE



**BEWARE OF IMITATIONS**